

MALAWI BRIEF COVID-19 SITUATION REPORT

1ST JULY 2021

Edna Chamgwera, Chrispine Botha and Derek Lakudzala

Contents

1	Introduction	3
2	Covid-19 Situation	3
2.1	Relaxation of COVID-19 Restrictions	6
3	COVID-19 Vaccination Status	7
4	Status of Travel Restrictions	7
5	Conclusion	7

1 Introduction

This is a brief report on the COVID-19 situation update for Malawi as of 30th June 2021. The report focuses on the situation of the pandemic in the country, vaccination status and travel restrictions. The update gives the situation from the time of submission of the last COVID-19 situation update report on 15th June, 2021.

2 Covid-19 Situation

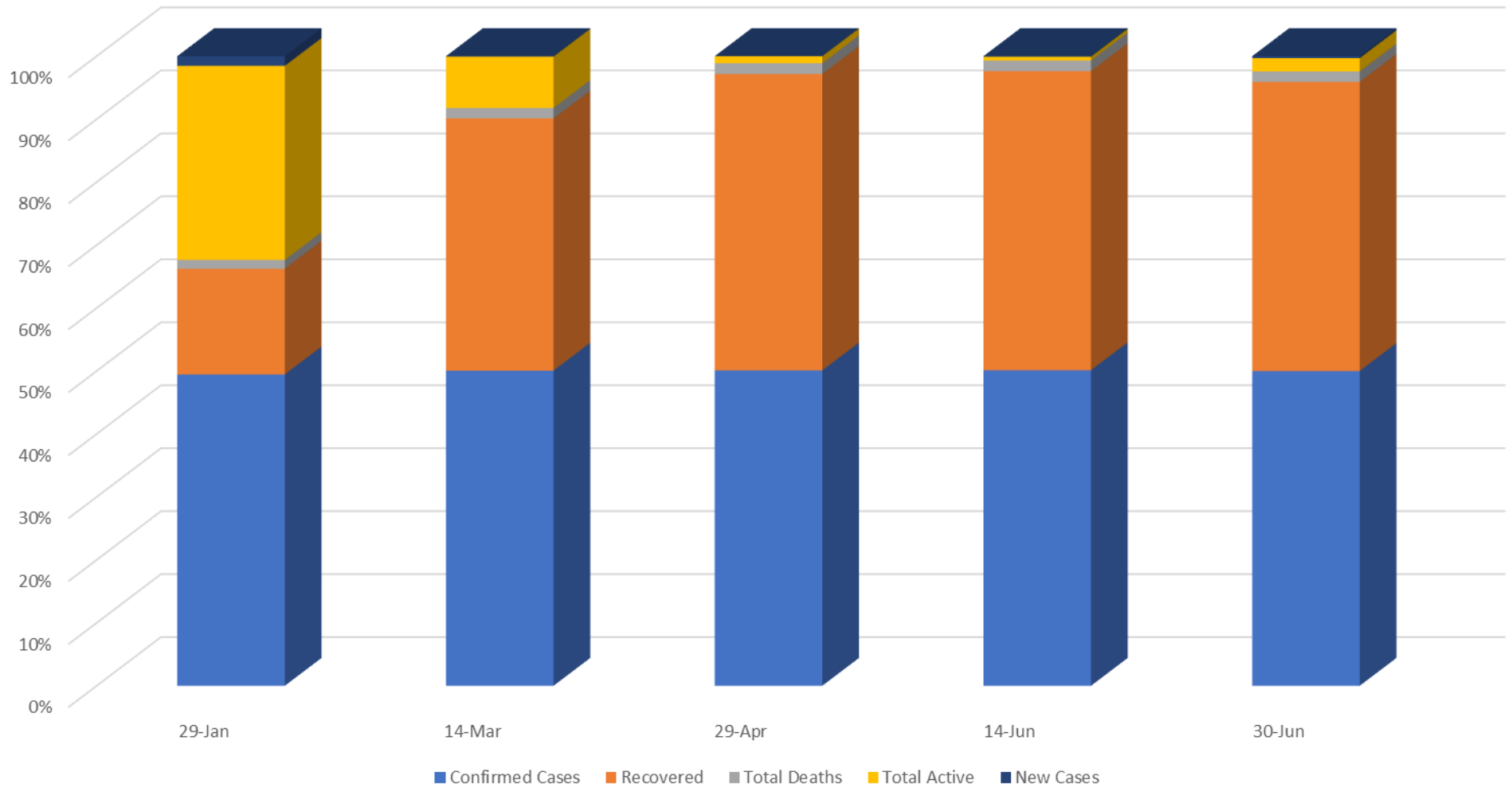
As of 30th June, 2021, Malawi had registered an accumulated total of 36,126 confirmed cases and 1,196 deaths (Case Fatality Rate is at 3.31%). Of these cases; 2,436 are imported infections and 33,690 are locally transmitted. Cumulatively; 33,169 cases have now recovered (recovery rate of 91.8%) and 232 were lost to follow-up. The total number of active cases is 1,529. Total tests conducted are at 268,117 and positivity rate is at 18.3% from 3.4% while weekly positivity rate (seven days moving average) is at 12.3% from 2.4%. These are very significant changes in a space of a fortnight.

The figures continue to rise and on 30th June, the country recorded the highest number of COVID-19 new cases and admissions since March 2021. With the increased number of active cases, the risk of rapid transmissions of the virus in the communities remains high. Proper wearing of facemasks is mandatory in all public places under the gazette COVID-19 prevention and containment rules.

The figure below shows the trend of figures from 31st January 2021 when the first report for the current year was submitted to 30th June 2021.

	29-Jan	14-Mar	29-Apr	14-Jun	30-June
Tests Conducted	140,385	208,165	231,856	253,426	268,117
Confirmed Cases	23,020	32,831	34,062	34,564	36,126
Recovered	7,815	26,259	32,023	32,753	33,169
Total Deaths	643	1,083	1,148	1,159	1,196
Total Active	14,352	5,355	757	420	1,529
Recovery Rate		80%	94%	94.80%	91.8%
New Cases	716	47	10	58	229
Positivity Rate		12.3%	2.6%	3.4%	18.3%
CFR		3.3%	3.37%	3.35%	3.31%

Malawi COVID-19 Situation Update



Malawi COVID-19 Situation Update

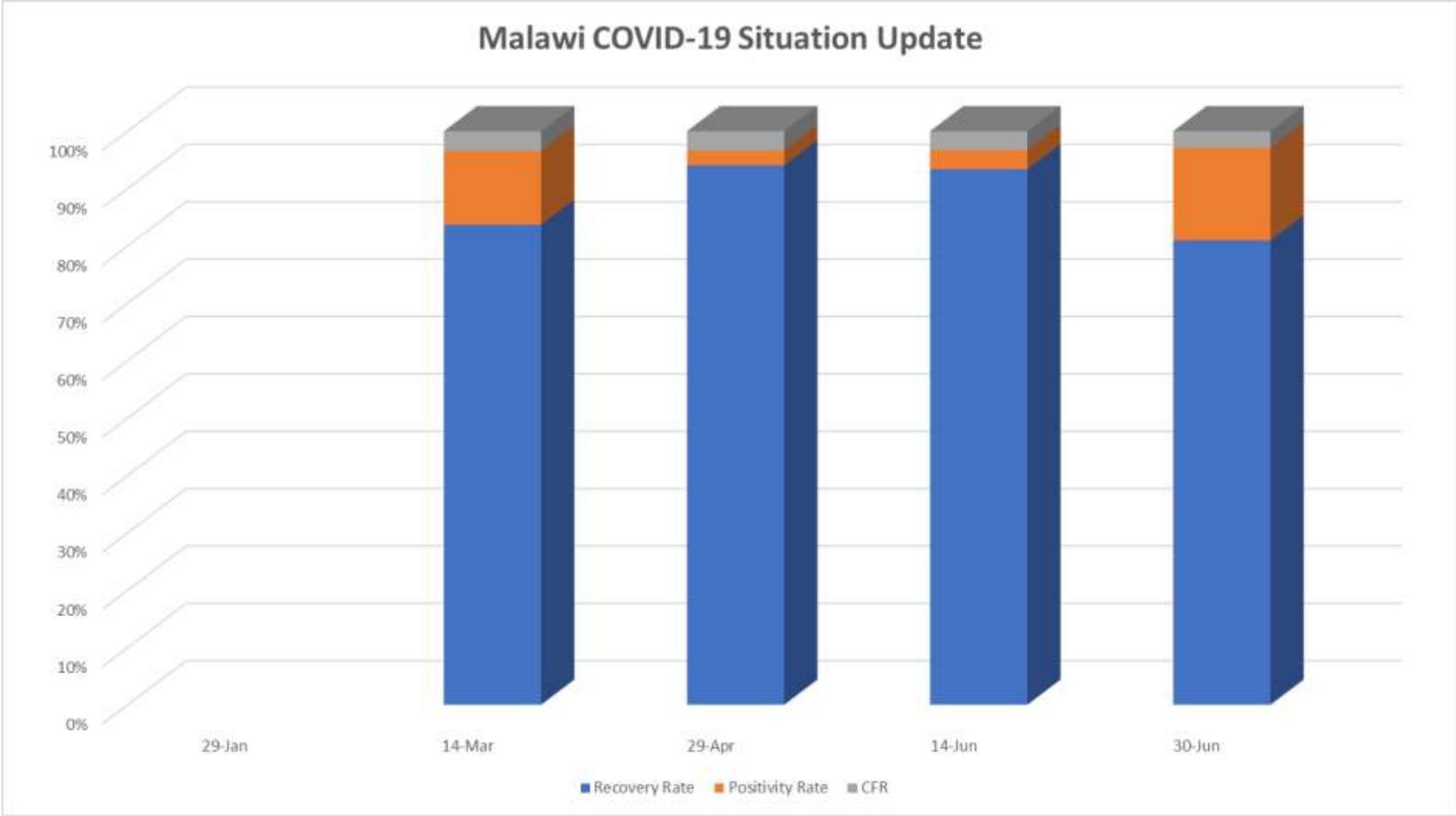
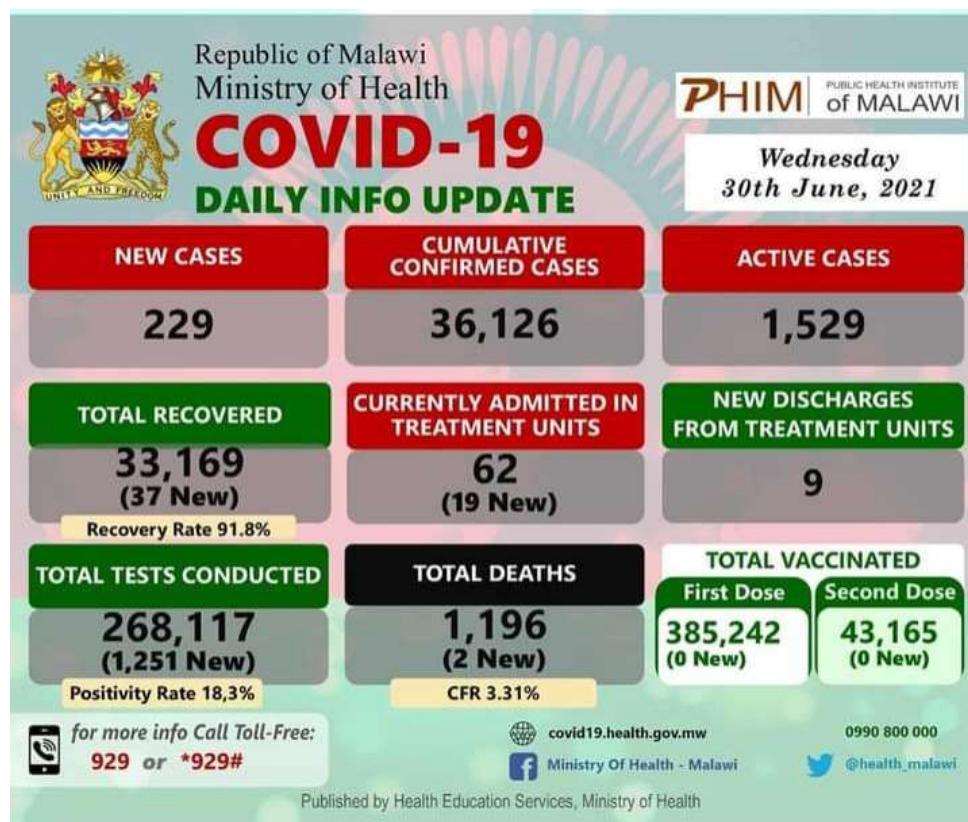


Figure 1: Snapshot of the situation as at 30th of June 2021



Source:

<https://web.facebook.com/malawimoh/photos/pcb.3949225101799642/3949224958466323/>

2.1 Relaxation of COVID-19 Restrictions

The relaxation of COVID-19 restrictions remains the same as reported in the previous report as follows: -

- Businesses operating hours have been extended by two hours from 8.00 pm to 10.00 pm;
- Bars operating hours have been extended by four hours from 8.00 pm to 12 midnight;
- Public transport capacity i.e., minibuses, coaches and standard buses are operating at 75%;
- The maximum number of people who may gather during indoor functions has been increased from 50 to 100;
- The maximum number of people who may gather for outdoor functions has been increased from 100 to 200.

3 COVID-19 Vaccination Status

Since the State President of the Republic of Malawi launched the COVID-19 vaccination exercise on 11th March, 2021; 385,242 people have received the first dose and 43,165 have received the second dose so far. A total of 428,407 vaccine doses have thus been administered in the country.

The Government continues to encourage people to keep on observing all COVID-19 preventive and containment measures i.e., physical distancing, hand hygiene and respiratory etiquette including proper wearing of facemask and ensuring adequate ventilation when having activities indoors. People are also encouraged to avoid the '3C' settings where COVID-19 spreads most easily: - crowds, close-contact and confined space.

Source: <https://m.facebook.com/malawimoh>

4 Status of Travel Restrictions



In order to guard against the threat of importation and spread of the new COVID-19 variant; Malawi has closed its entry points i.e. airports and land borders as outlined on the Travel Advisory.

5 Conclusion

The number of new cases keeps on increasing at a significant rate. With the increased positive rate of 18.3% from 3.4% within a fortnight, the Covid-19 situation is seen to have taken a third wave. For now, it is not safe to travel to Malawi. Planned travels should be put on hold until the situation improves. Moreover, the Government has only restricted entry and exit through Malawi to returning residents, diplomats, those on Government business, truck drivers carrying essential goods and those on medical travel.